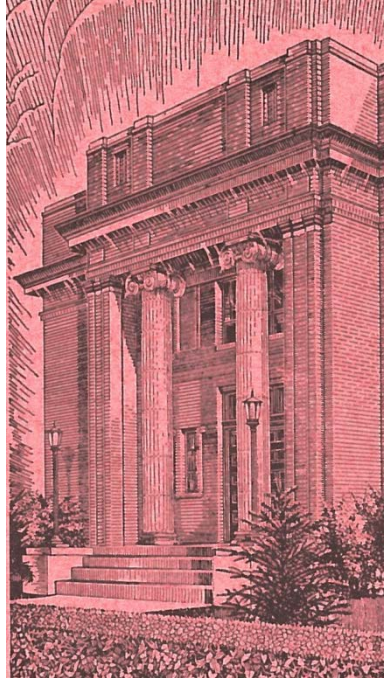




THE JACOB RADER MARCUS CENTER OF THE  
**AMERICAN JEWISH ARCHIVES**

---

**A Finding Aid to the  
Temple Emanuel (Duluth, Minn.) Records  
Manuscript Collection No. 420**



## Collection Summary

|                                 |   |
|---------------------------------|---|
| <b>Title</b>                    | Temple Emanuel (Duluth, Minn.) Records  |
| <b>Dates</b>                    | 1910-1961   |
| <b>Collection Number</b>        | MS-420  |
| <b>Repository</b>               | The Jacob Rader Marcus Center of the American Jewish Archives   |
| <b>Creator</b>                  | Temple Emanuel (Duluth, Minn.)<br>Temple Emanuel (Duluth, Minn.) Sisterhood<br>Ladies Aid Society (Duluth, Minn.) |
| <b>Extent</b>                   | 0.4 linear feet (1 Hollinger box)   |
| <b>Language of the Material</b> | English   |

## Administrative Information

|                            |  |
|----------------------------|--|
| <b>Biographical Sketch</b> | Reform congregation, founded in 1891; merged with Tifereth Israel Congregation in 1969.  |
| <b>Scope and Content</b>   | Correspondence and miscellaneous material pertaining to Temple Emanuel; together with records of the temple Sisterhood and the Ladies Aid Society.   |
| <b>Terms of Access</b>     | The collection is open for use; no restrictions apply.   |
| <b>Preferred Citation</b>  | Footnotes and bibliographic references should refer to the Temple Emanuel (Duluth, Minn.) Records and the American Jewish Archives. A suggestion for at least the first citation is as follows:<br><br>[Description], [Date], Box #, Folder #. MS-420. Temple Emanuel (Duluth, Minn.) Records. American Jewish Archives, Cincinnati, Ohio. |
| <b>Provenance</b>          | Received from Mrs. Harry W. Davis, Duluth, Minn., 1968.  |

## Index Terms

|                        |  |
|------------------------|--|
| <b>Subjects</b>        | Jewish women / Jews -- Minnesota -- Duluth / Synagogues -- Minnesota -- Duluth |
| <b>Corporate Names</b> | Temple Emanuel (Duluth, Minn.)   |

## Series A. General, 1910-1961

### Box and Folder Listing

- Box 1. Folder 1. Dues and cemetery fees, 1910-1922
- Box 1. Folder 2. Financial records, 1910-1923
- Box 1. Folder 3. Ladies Aid Society, 1910-1921
- Box 1. Folder 4. Industrial Removal Office, 1910-1921
- Box 1. Folder 5. Religious School/Committees, 1923-1960
- Box 1. Folder 6. Sisterhood, 1912-1961
- Box 1. Folder 7. Miscellaneous correspondence, 1923-1957