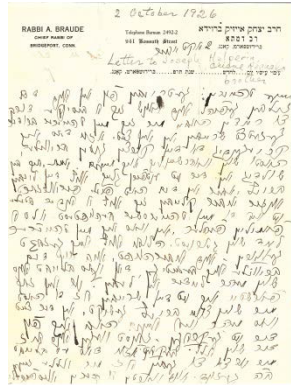




THE JACOB RADER MARCUS CENTER OF THE
AMERICAN JEWISH ARCHIVES

**A Finding Aid to the
Chiene Rachel Braude Papers
Manuscript Collection No. 227**



Collection Summary

Title	Chiene Rachel Braude Papers
Dates	1923-1970
Collection Number	MS-227
Repository	The Jacob Rader Marcus Center of the American Jewish Archives
Creator	Braude, Chiene Rachel Braude, William G., 1907-1988
Extent	0.8 linear feet (2 Hollinger boxes)
Language of the Material	English and Yiddish

Administrative Information

Biographical Sketch Born Chiene Rachel Halperin; married Yitzhak Aisik Braude.

Scope and Content Correspondence. Includes Braude family genealogy compiled by her son, William G. Braude.

Terms of Access The collection is open for use; no restrictions apply.

Preferred Citation Footnotes and bibliographic references should refer to the Chiene Rachel Braude Papers and the American Jewish Archives. A suggestion for at least the first citation is as follows:

[Description], [Date], Box #, Folder #. MS-227. Chiene Rachel Braude Papers. American Jewish Archives, Cincinnati, Ohio.

Provenance Received from William G. Braude, Providence, R.I., 1980.

Index Terms

Personal Names	Braude, Chiene Rachel
Corporate Names	Braude family
Media	Genealogies

Series A. General, 1923-1970

Box and Folder Listing

Box 1. Folder 1. Family genealogy.

Box 1. Folder 2. Auerbach, Sarah and Abba Shmuel (niece), 1932-1965

Box 1. Folder 3. Braude, Michael (son), 1945-1962

Box 1. Folder 4. Braude, William G. (son), 1923-1926, 1928-1934

Box 1. Folder 5. Braude, William G. (son), 1935

Box 1. Folder 6. Braude, William G. (son), 1936

Box 1. Folder 7. Braude, William G. (son), 1937

Box 1. Folder 8. Braude, William G. (son), 1938-1939

Box 2. Folder 1. Braude, William G. (son), 1940-1945

Box 2. Folder 2. Braude, William G. (son), 1946-1961

Box 2. Folder 3. Braude, William G. (son), 1966, 1968, 1970

Box 2. Folder 4-6. Braude, William G. (son), undated

Box 2. Folder 7. Felman, Sheine Ete (sister), 1930-1939

Box 2. Folder 8. Miscellaneous family letters.